

Secure Facility Construction



SCIF (or other Secure Work Environment)

Secure Compartmented Information Facility

- Incorporates Materials, Means, and Methods to achieve a Physical, IT, and Technical security standards to prevent the loss of information.
- Each SCIF/SWE is constructed to defeat various threats and vulnerabilities, against the mission in that space.
- Different Government and Commercial Organisations set their own standards and requirements for their security.



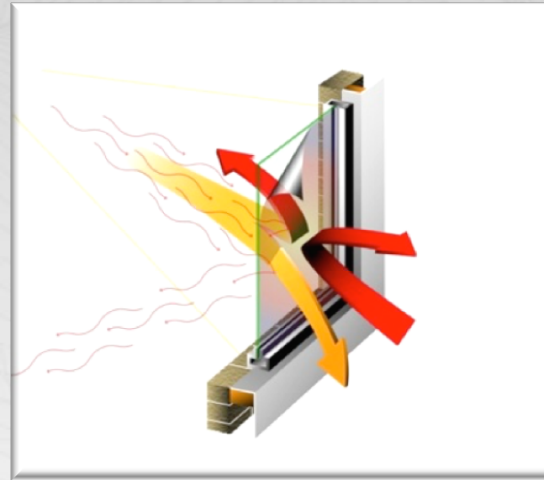
RF/IR Protection

Building Exterior

Reject RF/IR/UV Signals:

Outside Threats:

- Eavesdropping & Theft of Electronic Data
- IR Laser Microphones
- EMI/RFI Transmissions
- UV/Solar Emissions
- Bugs/Surveillance

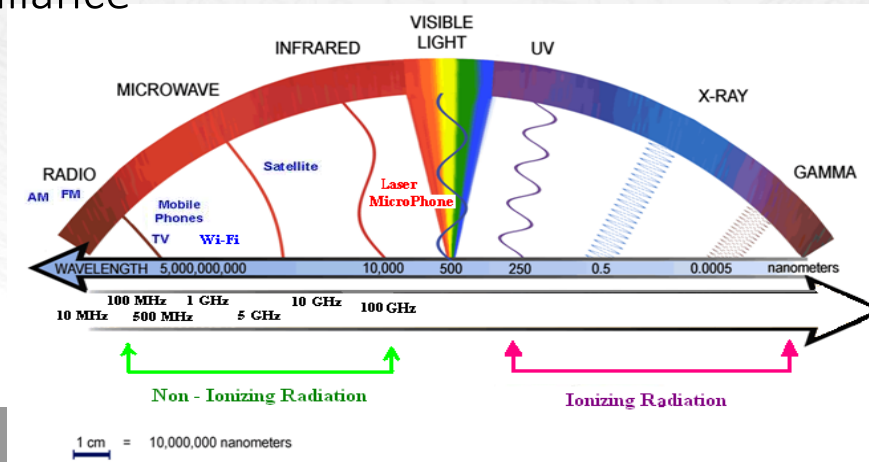


Building Interior

Rejects RF/IR Signals:

Reduces “Leakage”

- Laptops
- Computer Monitors
- Display Screens
- Tablets
- Cell Phones
- Wireless
- Bluetooth
- Z-Wave
- Zigbee
- Bugs/Surveillance
- Safety Film

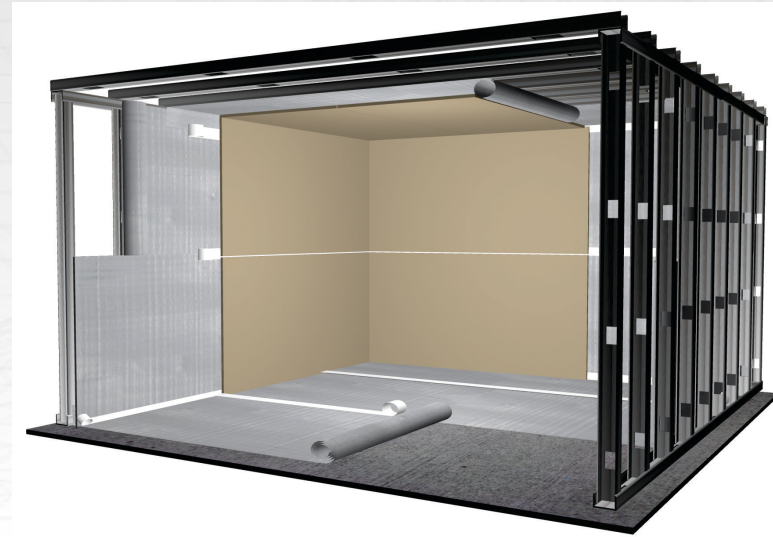


Ultra NT rFoil



A heavy duty radiant barrier sheet made up of a single layer of woven polyethylene material bonded to - and sandwiched between - two highly reflective aluminum surfaces.

35-65dB, 100MHz to 10 GHz.



Access & Egress Management



CCTV Systems



- Project Management
- Command Control Center
- Video Analytics
- Facial Recognition
- Human Behavior Analysis



Gate Control Systems



- Metal Door Detectors,
- Xray Solutions
- Cards/ Biometric Entrance Systems
- Barrier Solutions
- Plate Recognition
- Under Vehicle Control Systems



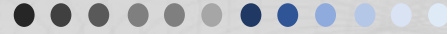
Metal / Non-Metal XRAY Solutions



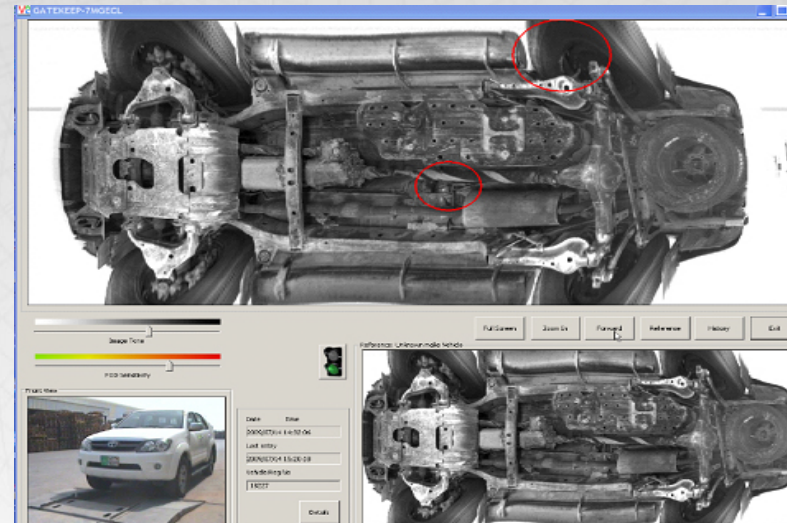
Security Doors



Barriers & Gates



Under Vehicle Control & Plate Recognition Systems



Under Vehicle Surveillance System (UVSS)

Fully automatic detection of hazards or modifications in the lower body of the vehicle. After passing through the scan tool, the Automatic Foreign Object Detection software automatically compares the lower body of the vehicle with a safe vehicle (located in the database) within 2-3 seconds and displays both vehicles on the screen. The system then detects any foreign object or modification that may create a threat element in the lower body of the vehicle, circling a red ring (shown above) and activates an audible and / or visual alarm.